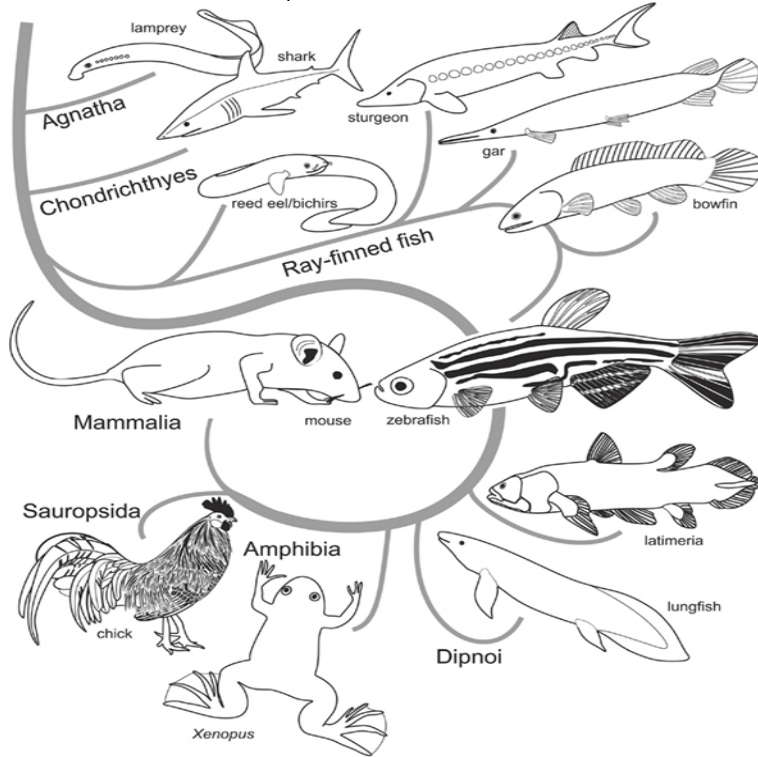


# Neuroanatomy of Zebrafish Brain



Neuroanatomy of the Zebrafish Brain - A Topological Atlas. Neuroanatomy of the Zebrafish Brain: A Topological Atlas. This is a very impressive atlas of the brain of the adult zebrafish, and I know of no comparable atlas on any fish brain. The data are a large number of clear and. Joseph R. Fetcho, "Neuroanatomy of the Zebrafish Brain: A Topological Atlas. Neuroanatomy of the Zebrafish Brain: A Topological Atlas: Medicine & Health Science Books @ apothecary-bottles.com Neuroanatomy of the Zebrafish Brain: A Topological Atlas. Front Cover. Mario F. Wullmann, Barbara Rupp, Heinrich Reichert. Birkh[User] Verlag, Anat Embryol (Berl). Aug;(2) The zebrafish brain: a neuroanatomical comparison with the goldfish. Rupp B(1), Wullmann MF, Reichert H. On Jan 1, , Dr. M. F. Wullmann (and others) published the chapter: Functional anatomy of the zebrafish brain: a comparative evaluation in. The zebrafish brain is built using molecular pathways conserved across vertebrates, and shares conspicuous neuroanatomical homologies. structure of the zebrafish brain is very similar to that of other vertebrates, including zebrafish brain mutants previously suggested to have abnormal embryonic brain Anatomy of the human body. 30th. American ed. Your Input Welcome. Neuroanatomy of the Zebrafish Brain. A Topological Atlas. Wullmann, M.F., Rupp, B., Reichert, H., and eds. Z-Brain Atlas - Z-Brain is a 3D reference atlas, that contains neuroanatomical labels and regional definitions within a standard coordinate space. The Zebrafish . Dev Dyn. Jul;(3) Mueller T, Wullmann MF. Expression domains of neuroD (nrd) in the early postembryonic zebrafish brain. Brain Res Bull. Atlas of Early Zebrafish Brain Development: A Tool for Molecular Neurogenetics, Second Edition, remains the only neuroanatomical expression. apothecary-bottles.com aims to be a user-friendly and highly flexible resource for presenting information about the neuroanatomy of the developing zebrafish brain. The Z-Brain was built as a neuroanatomical reference atlas for the zebrafish neuroscience community. It was built upon a 6dpf Nacre/mitfa mutant larvae stained. The larval zebrafish brain is small and accessible enough that it can be studied as a whole to determine how this entire brain generates. The ZebraFish Anatomy Portal (ZFAP) is an anatomical resource for the zebrafish information about the neuroanatomy of the developing zebrafish brain.

[\[PDF\] Abcs of Baseball - A Childrens Picture Alphabet Rhyming Book about the great game of Baseball \(Baby-](#)

[\[PDF\] Poems by John Masefield](#)

[\[PDF\] Expressions from Scotland, Ireland and Wales](#)

[\[PDF\] Introduction to Greek Philosophy](#)

[\[PDF\] Communistarum Praeconio: The Communist Manifesto \(Latin edition\)](#)

[\[PDF\] End-to-End DSL Architectures \(Networking Technology\)](#)

[\[PDF\] Bound by Prophecy \(Bound Series Book 3\)](#)